

SM 1200 TRIFLEX - STAR SCREEN



SM STAR SCREEN

MAIN ADVANTAGES

- one working step - 3 fractions
- high throughput
- the separated materials are highly pure
- precisely separated materials
- possibility to screen even materials with variable moisture content
- compact dimensions and high screening performance
- low noise
- can be combined with other Doppstadt products
- one-man operation (remote control of all main functions)



SCREENING MOST DIFFICULT MATERIALS

THE DOPPSTADT STAR SCREEN SM 1200 TRIFLEX

The Doppstadt star screen SM 1200 Triflex is a powerful and efficient star screen.

On a robust steel frame, there are two screening levels with a series of screening shafts with numerous star-shaped discs.

WORKING PRINCIPLE

The material to be screened is charged into the hopper. From the conveying floor it is transported to the coarse screening deck by means of a material conditioner. The coarse screening deck carries out the first step of material separation. The medium fraction falls through the gaps of the star screener while the oversize is transported from one star shaft to the next and finally discharged.

The rotation in the same direction of all the star elements loosens, recirculates and transports the material.

By means of different shaft speeds the material is torn apart. The grain size of the fines can be determined by different star sizes and different speeds.

On the lower level, the fine screening deck, the material is screened once again, separated into the medium and fine fraction and then discharged by two side conveyors.

With its more than 13 m² (140 sq ft) screening surface, the Doppstadt SM 1200 Triflex achieves very high throughput capacities. The throughput capacity is not even reduced in case of wet materials.

The separated materials are highly pure.

Optional equipment extend the range of applications: windsifter, star screen above the hopper, stonegrid, magnetic separator.



SM 1200 TRIFLEX



Coarse screening deck



Wood chips



Waste wood

SM 1200 Triflex

Powerful and efficient star screen with material conditioner and two screening decks for screening three fractions.

Permissible weight	22 000 kg (48 502 lb)
Drive	diesel engine DEUTZ TCD 3.6 L4 power 90 kW (122 hp) at 2 000 rpm
Screening decks	upper (coarse) length 5 500 mm (18'1") width 1 250 mm (4'1") lower (fine) length 4 800 mm (15'9") width 1 200 mm (3'7")
Transport dimensions	L/W/H 12 000 / 2 550 / 4 000 mm (39'4" / 8'4" / 13'1")



Logs and roots

SM 1200 SA TRIFLEX



Wood chips



Logs and roots



Waste wood

SM 1200 SA Triflex

Powerful and efficient star screen with material conditioner and two screening decks for screening three fractions.

Permissible weight	27 000 kg (59 525 lb)
Drive	diesel engine DEUTZ TCD 3.6 L4 power 90 kW (122 hp) at 2 000 rpm
Screening decks	upper (coarse) length 5 500 mm (18'1") width 1 250 mm (4'1") lower (fine) length 4 800 mm (15'9") width 1 200 mm (3'7")
Transport dimensions	L/W/H 9 650 (10 790) / 2 550 / 3 900 mm (31'7" (35'5") / 8'4" / 12'8")



Large side doors for maintenance

SM-OPTIONS FOR SCREENS



HOPPER STAR SCREEN

The hopper star screen can be mounted on the hopper of the screen. It is driven by an additional hydraulic connection at the machine. The hopper star screen separates oversize >200 mm before the actual screening of the shredded material (e.g. shredded waste wood, trunks and roots). It enables the separation of the fines and the oversize in just one path.

Available for

- SM 518 (only with large feeding hopper)
- SM 620
- SM 620 K
- SM 720
- SM 1200
- SM 1200 SA



VIBRATING GRID

The vibrating grid is used for separating bulky contaminants >200 mm (e.g. big rocks) and prevents damage e.g. of the drum. The vibration automatically moves the material which is then tipped at the side of the machine. The vibration also loosens cohesive materials and leads to a better screening result. It is driven by an additional hydraulic connection at the machine.

Available for

- SM 518
- SM 620
- SM 620 K
- SM 720
- SM 1200
- SM 1200 SA



STONEGRID

The stonegrid is used for separating bulky contaminants >200 mm (e.g. big rocks) and prevents damage e.g. of the drum.

The stonegrid is tilted hydraulically via remote control. The material is tipped at the left side of the machine.

Available for

- SM 414
- SM 414 K
- SM 518
- SM 620
- SM 620 E HYBRID
- SM 620 K
- SM 720
- SM 1200
- SM 1200 SA



STAR SCREEN MODULE

The star screen deck is a compact module which can be used instead of the drum. Due to different speeds of the shafts the material is loosened up and pulled apart.

Different grain sizes can be reached by using different star screen decks.

Available for

- SM 620
- SM 620 E HYBRID
- SM 620 K



WINDSIFTER (REAR CONVEYOR)

The windsifter is used to separate light materials from the oversize fraction. Materials such as foils, plastics etc. can be sorted out so that the cleaned oversize is of further use (e.g. biomass, compost, etc.).

The windsifter is mounted on the rear conveyor. The contaminants are blown into a container. It is driven by an additional hydraulic connection at the machine.

Available for

- SM 518
- SM 620
- SM 620 K
- SM 720



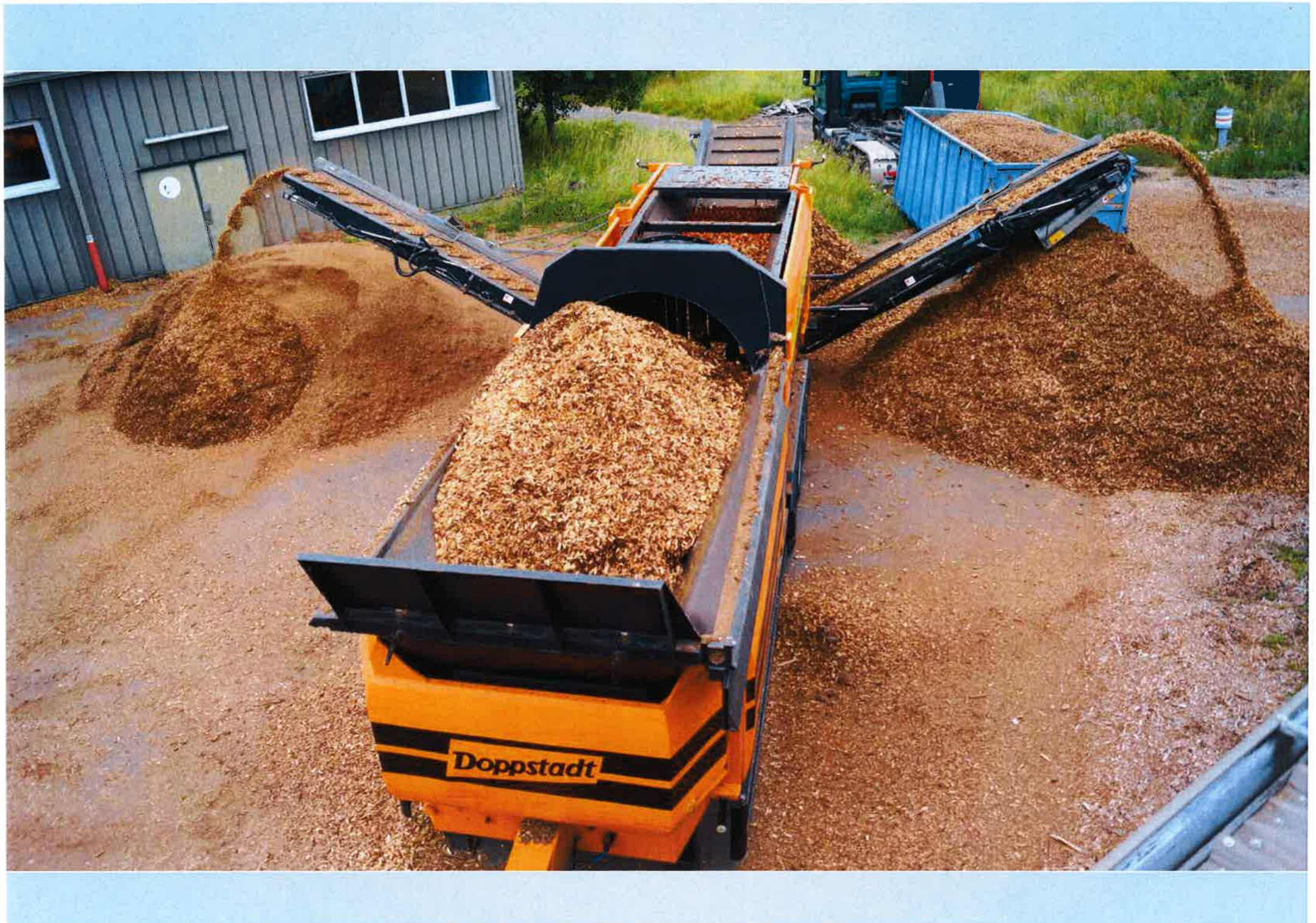
WINDSIFTER ON STAR SCREEN DECK

The windsifter is used to separate light materials from the oversize fraction. Materials such as foils, plastics etc. can be sorted out so that the cleaned oversize is of further use (e.g. biomass, compost, etc.).

The contaminants are blown into a container. It is driven by an additional hydraulic connection at the machine.

Available for

- SM 620
- SM 620 K
- SM 1200
- SM 1200 SA



Doppstadt